

# REACH ALPHA

LIGHTWEIGHT, DEXTEROUS, SMART

REACH  
ROBOTICS

- **TOUGH**  
300m Depth Rating  
Field Proven
- **USABLE**  
Intuitive Interface  
Master Arm Controlled
- **ADVANCED**  
0.1° Joint Accuracy  
Kinematics and Self-Protection



## REVOLUTIONARY ROBOTIC ARMS FOR SUBSEA INSPECTION

With high accuracy (0.1°) joint positioning and our Master Arm topside controller, Reach Alpha is a must for operators in the new era of close inspection work and complex intervention.

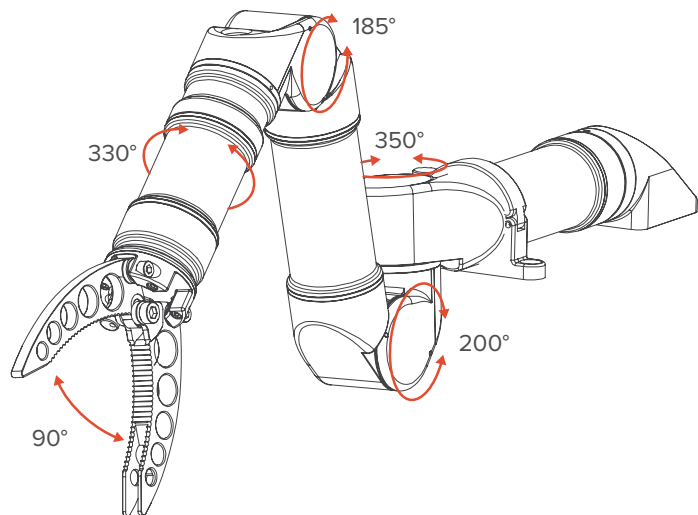
[reachrobotics.com](http://reachrobotics.com) | [info@reachrobotics.com](mailto:info@reachrobotics.com) | +61 (2) 9519 7651



ROV Proven

Master Arm Enabled

## RANGE OF MOTION



## BE CONFIDENT

The Alpha 5 is a tough and reliable multi-function electric manipulator for harsh environments.

## FEATURES & SPECIFICATIONS

- Fits on very light ROVs
- Quick to integrate
- End-effector interchangeable
- Embedded controllers - no additional POD
- Adjustable grab force - pick up a sea urchin or cut a cable
- Self-protection against collision
- One-click home position
- Corrosion and scratch resistant anodized aluminium
- Highly Modular and Configurable - 3, 4 or 5 function versions available

Max Closing Force	600N
Water Weight	0.9kg
Reach	400mm
Outer Diameter	40mm
Lift at Full Reach	2kg
Depth Rating	300m

## MISSION SPECIFIC END-EFFECTORS

### INTERCHANGE WITH EASE



RA-1018



RA-1011



RA-1070



RA-1014



RA-1012



RA-1017



RA-1037



RA-1048